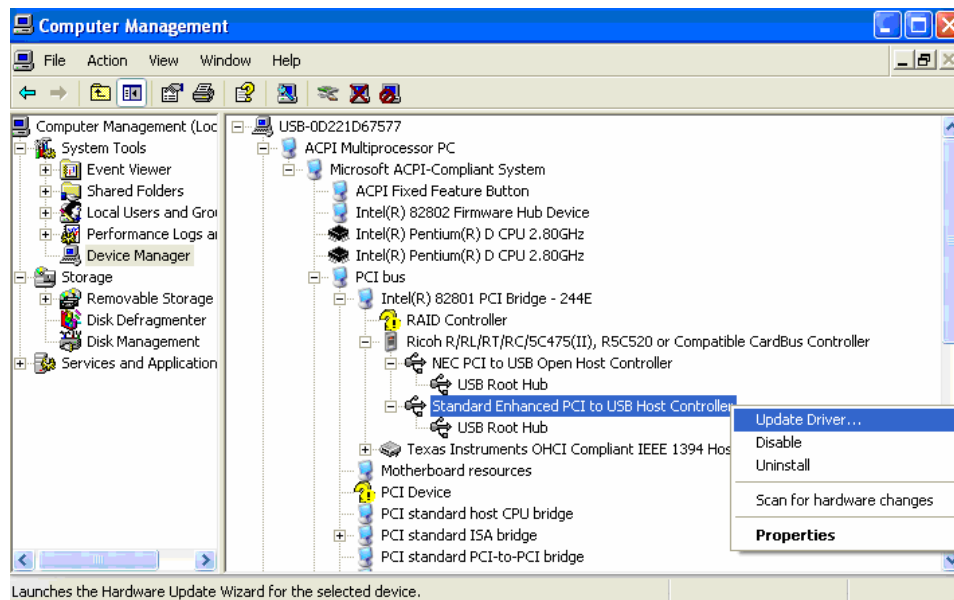


## Installation procedure for a filter driver

The following steps indicate how to install a filter driver for EHCI driver in Windows XP environment.

1. Open the Device Manager and right-click on “**Standard Enhanced PCI to USB Host Controller**”.

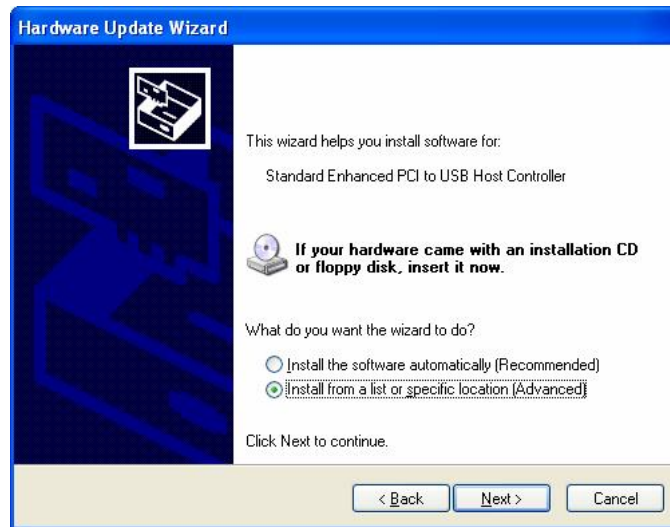
Then, select “**Update Driver**”.



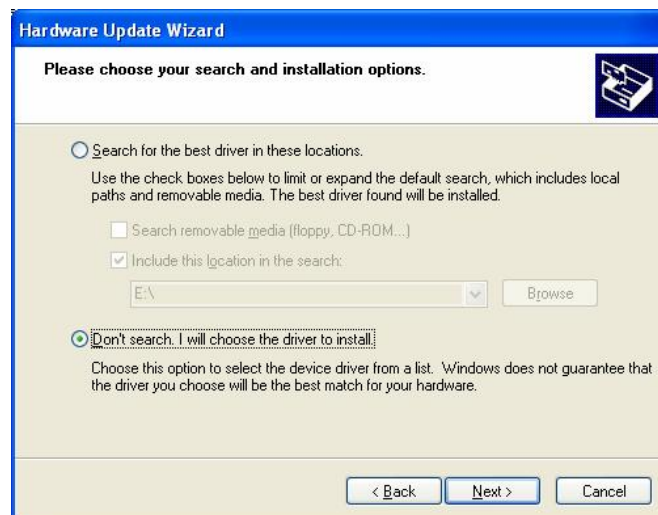
2. Select “**No, not this time**” and click “**Next >**” to continue.



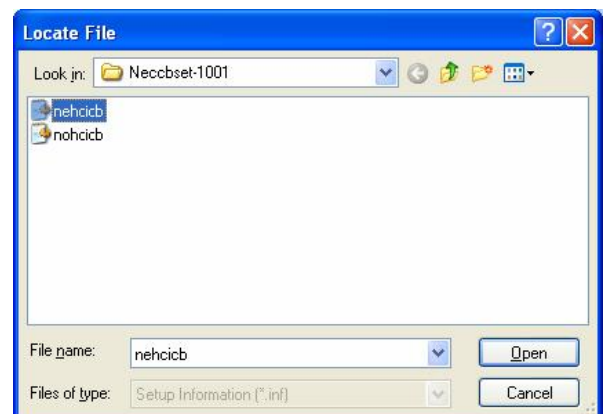
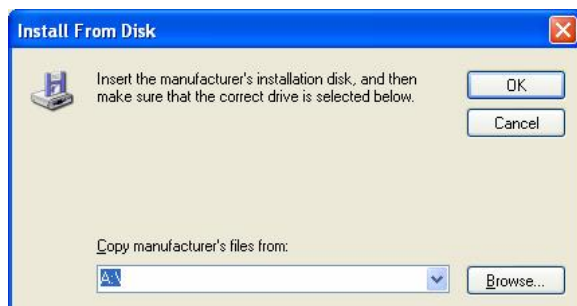
3. Select **“Install from a list or specific location (Advanced)”**. Then, click **“Next >”** to continue.



4. Select **“Don’t search. I will choose the driver to install”**. Then, click **“Next >”** to continue.



5. Click **“Browse”** button and select the directory where the filter drivers are located. And then, choose **“nehcicb”** and click **“Open”**.  
Again, click **“OK”** button in the “Intall From Disk” window.



6. Click “Continue Anyway”.



7. Installation is finished.



8. After installation completed, the name of the standard EHCI driver is changed to the image shown in below.

